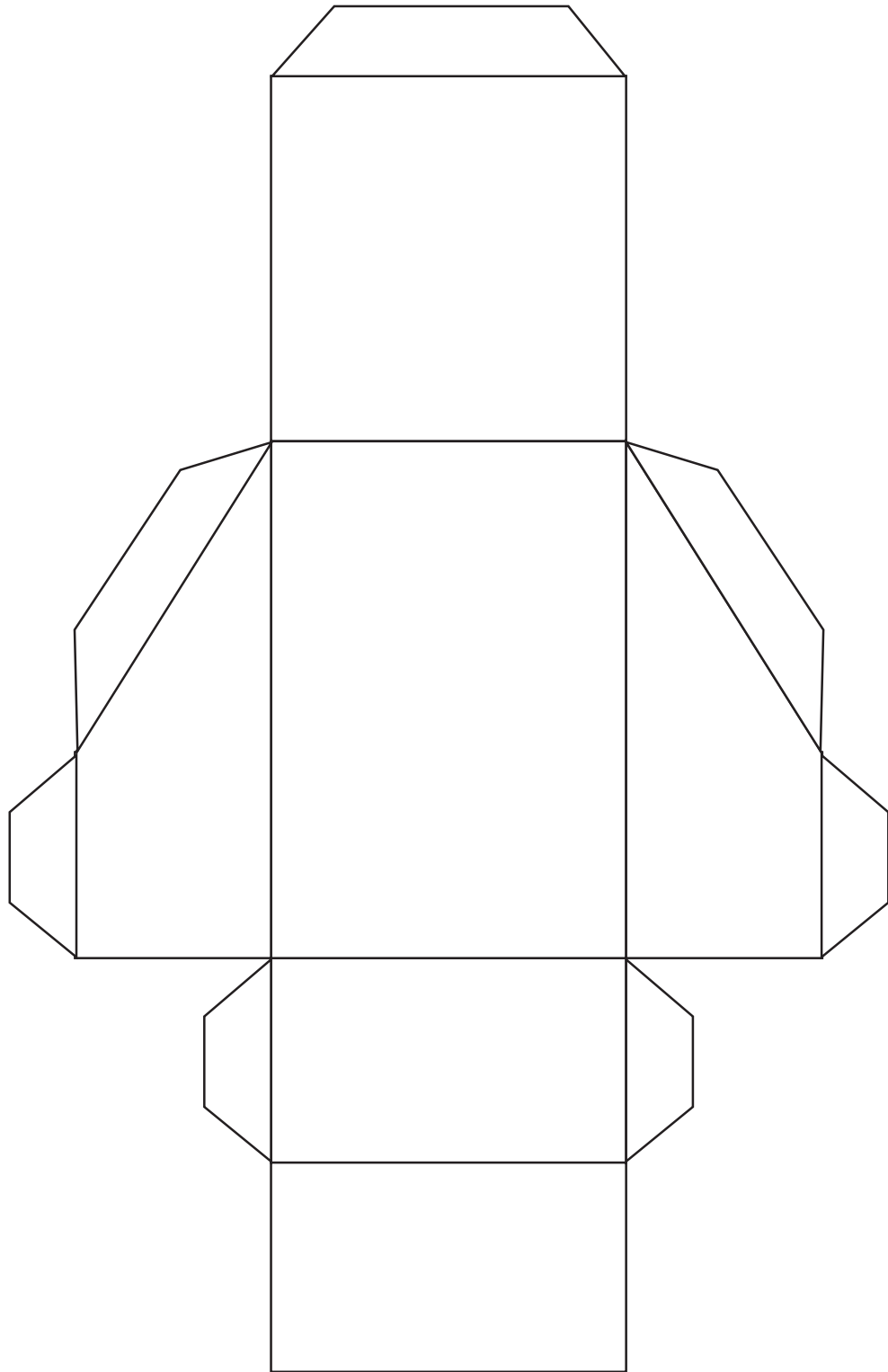


**BASE**

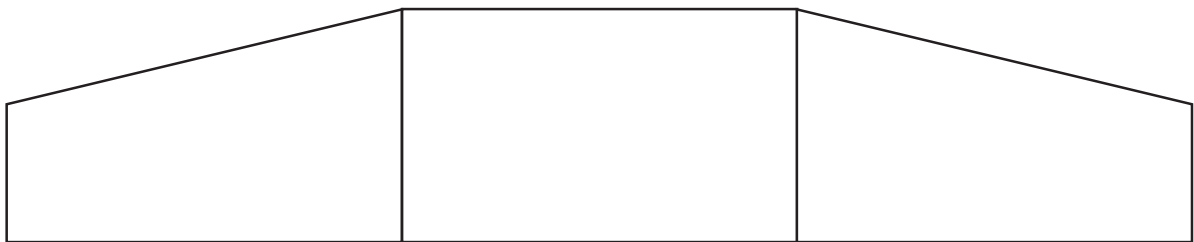


For promotional use only ©2017 WBEI and DC Comics.  
All Rights Reserved. LEGO, the LEGO logo and the  
Minifigure are trademarks and/or copyrights of the LEGO  
Group. © 2017 The LEGO Group. BATMAN characters  
and elements © & ™ DC Comics.

**CABIN**

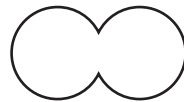
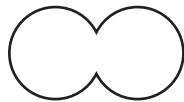


**REAR WING**

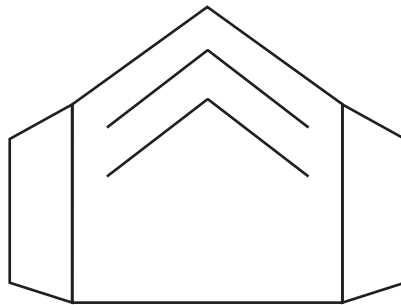


For promotional use only ©2017 WBEl and DC Comics.  
All Rights Reserved. LEGO, the LEGO logo and the  
Minifigure are trademarks and/or copyrights of the LEGO  
Group. © 2017 The LEGO Group. BATMAN characters  
and elements © & ™ DC Comics.

A project by  
**The Craft Train**  
[www.thecrafttrain.com](http://www.thecrafttrain.com)



**HEADLIGHTS**

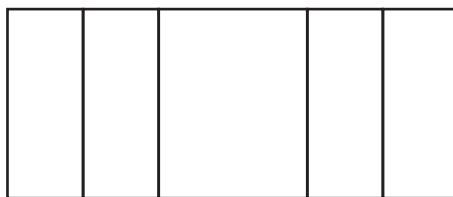


**GRILL**

**BATMAN**

**BATMAN**

**FRONT AND REAR NUMBERPLATES**



**BONNET DETAIL**



For promotional use only ©2017 WBEI and DC Comics. All Rights Reserved. LEGO, the LEGO logo and the Minifigure are trademarks and/or copyrights of the LEGO Group. © 2017 The LEGO Group. BATMAN characters and elements © & ™ DC Comics.

A project by  
**The Craft Train**  
[www.thecrafttrain.com](http://www.thecrafttrain.com)